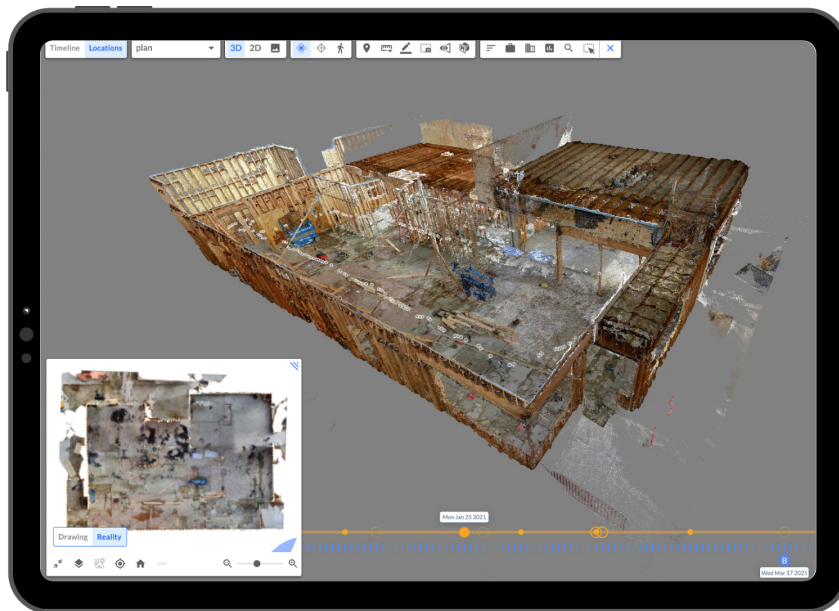


Perform Easy, 3D Site Surveys of Your Stores in Minutes.

Reconstruct’s cutting-edge, 3D scanning technology creates measurable and immersive site surveys of your sites and stores. This single source of project truth empowers you to assess current conditions, plan for renovations, overlay future designs against reality, and create floorplans and 3D models—all while reducing travel, professional site surveying expenses, and unnecessary construction delays.



Reduction in travel time and cost



Improvement in on-time completion



Reduction in time spent in OAC and coordination meetings

OUR FEATURES



CREATE 2D FLOOR PLANS



GENERATE 3D MODELS



CONDUCT REMOTE WALKTHROUGHS



ASSESS CURRENT CONDITIONS



OVERLAY DESIGN AGAINST REALITY

Reality Mapping for Every Budget.

Virtually any employee can capture job site footage using any device. Reconstruct automatically blends data to create 2D floor plans and 3D models that show construction progress in space and over time. Captures are quick, intuitive, and require no expertise, enabling frequent project monitoring, rapid error detection, and construction progress visibility.

OUR CAPTURE DEVICES



360 CAMERA
Quick, Immersive Mapping



DRONE
Large-Scale Mapping



IPHONE
On-Demand Captures



MATTERPORT
Photorealistic Walk-Throughs



LASER SCANNER
High-Precision QA/QC Tasks

OUR USE CASES



REMOTE PROJECT MONITORING



SCHEDULE & PROJECT CONTROLS

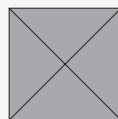


ONLINE AS-BUILTS & DOCUMENTATION



INFRASTRUCTURE & FACILITY ASSESSMENTS

OUR CUSTOMERS



See Your Project in Reconstruct

demo@reconstructinc.com
www.reconstructinc.com