

Reduce Risk with Remote Job Site Monitoring.

Reconstruct’s cutting-edge reality mapping technology creates measurable and immersive digital twins of your project as built, and then integrates them against design and project schedules.



Visibility into schedule, quality, and safety risk



Reduction in travel time and cost

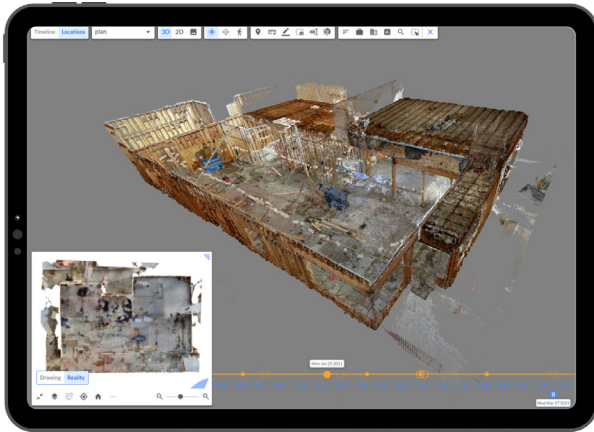


Improvement in schedule adherence



More efficient and proactive coordination meetings

ABOUT RECONSTRUCT



Reconstruct is a single source of project truth that displays as-built vs. as-planned conditions throughout the entire project lifetime, empowering you to manage construction projects remotely, mitigate risk, and make better decisions—all while reducing excess travel, risk of safety hazards, costly rework, and budget-breaking delays.

What’s more, Reconstruct creates 3D site surveys and 2D floor plans directly from standard 360 cameras, smartphones, and drones. This makes reality mapping faster and more affordable, enabling on-site teams to perform such captures at frequent and regular intervals while reviewing reality against design and schedule data at any point in time.

OUR FEATURES



OVERLAY WHAT’S BEEN BUILT VS. WHAT’S BEEN PLANNED



PRECISELY MEASURE INSTALLATIONS AND CONSTRUCTION AGAINST DESIGN



VISUALIZE AND RESOLVE SAFETY AND QUALITY ISSUES IMMEDIATELY



PROACTIVELY IDENTIFY RISK OF SCHEDULE DELAYS THROUGHOUT CONSTRUCTION



TRACK PROGRESS AGAINST BASELINE SCHEDULE



TURN BACK TIME FOR SCHEDULE FORENSIC ANALYSIS



Reality Mapping and Reality-vs.-Plan Review for Every Budget.

Virtually any site personnel can rapidly capture a job site using a 360 camera, drone, or smartphone device—or a combination of these devices. Using videos and images, Reconstruct automatically creates 2D floor plans and 3D models that show construction progress in space and over time, allowing for frequent, easy, and frustration-free quality and safety reviews.

Reconstruct also integrates this photogrammetry data against imported laser scanner point clouds so that project teams—on and offsite—can benefit from a true Time Machine for Construction™. This enables stakeholders to review as-is conditions or discover what was placed behind a wall or buried underground without demolition, even years after project completion.

In Reconstruct, design and schedule data can also be integrated together and against reality mapping data, allowing teams to analyze planned vs. as-built conditions and forecast delay risk and schedule completion. Reconstruct also empowers all stakeholders, including risk engineers—whether in coordination meetings, on-site, or remote—to review and plan for potential risk issues, including delays, safety, or quality problems, long before they impact the project.

OUR USE CASES

- REMOTE PROJECT MONITORING
- SCHEDULE & PROJECT CONTROLS
- ONLINE AS-BUILTS & DOCUMENTATION
- SCHEDULE FORENSIC ANALYSIS

OUR CAPTURE DEVICES



360 CAMERA
Quick, Immersive Mapping



DRONE
Large-Scale Mapping



IPHONE
On-Demand Captures



MATTERPORT
Photorealistic Walk-Throughs



LASER SCANNER
High-Precision QA/QC Tasks

OUR CUSTOMERS



See Your Project in Reconstruct

demo@reconstructinc.com
www.reconstructinc.com