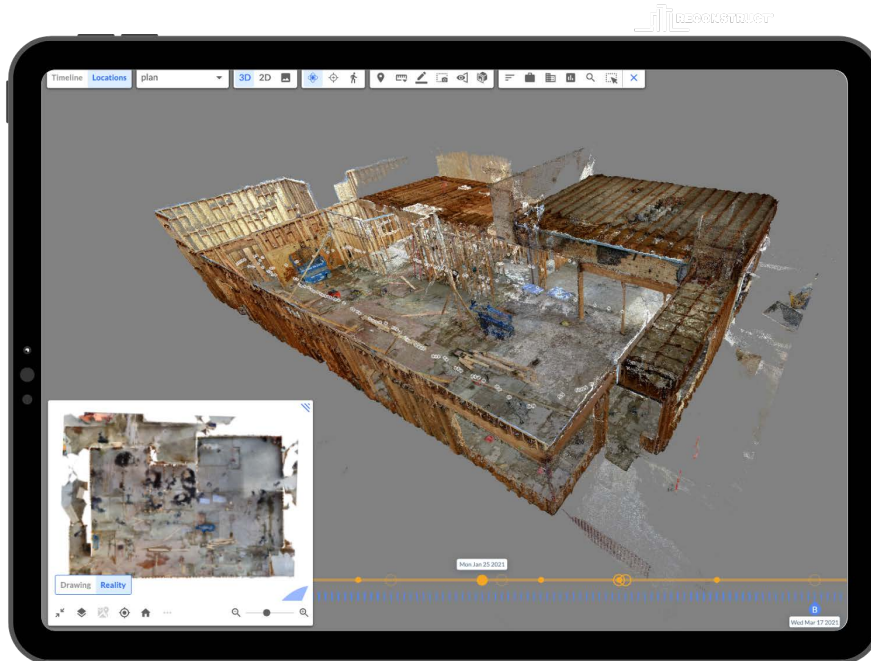


Bring the Project Site to Decision-Makers.

Reconstruct's cutting-edge reality mapping technology creates measurable and immersive digital twins of your assets. This single source of project truth empowers you to manage construction projects remotely, mitigate risk, and make better decisions—all while reducing excess travel to the job site, costly rework, and budget-breaking delays.



Reduction in travel time and cost



Improvement in on-time completion



Reduction in time spent in OAC and coordination meetings

OUR FEATURES



REMOTELY MEASURE WITH PRECISION



VISUALIZE & RESOLVE ISSUES IMMEDIATELY



COMPARE WHAT'S THERE VS. WHAT SHOULD BE THERE



INTEGRATE SCHEDULES



TURN BACK TIME

Reality Mapping for Every Budget.

Virtually any employee can capture job site footage using any device. Reconstruct automatically blends data to create 2D floor plans and 3D models that show construction progress in space and over time. Captures are quick, intuitive, and require no expertise, enabling frequent project monitoring, rapid error detection, and construction progress visibility.

OUR CAPTURE DEVICES



360 CAMERA

Quick, Immersive Mapping



DRONE

Large-Scale Mapping



IPHONE

On-Demand Captures



MATTERPORT

Photorealistic Walk-Throughs



LASER SCANNER

High-Precision QA/QC Tasks

OUR USE CASES



REMOTE PROJECT MONITORING



SCHEDULE & PROJECT CONTROLS



ONLINE AS-BUILTS & DOCUMENTATION



INFRASTRUCTURE & FACILITY ASSESSMENTS

OUR CUSTOMERS



See Your Project in Reconstruct

demo@reconstructinc.com
www.reconstructinc.com